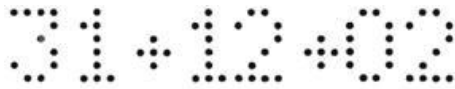
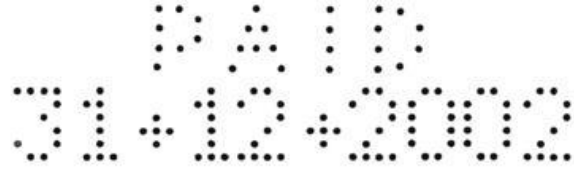


## Perforator Date/Numbers

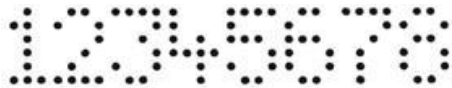
### - PERFORATION SAMPLES -



Date 8-digit (Needle  $\phi$ 1.0, 4 x 6 dots)



Date 10-digit w/PAID (Needle  $\phi$ 1.0)



Number 8-digit (Needle  $\phi$ 1.0, 4 x 6 dots)

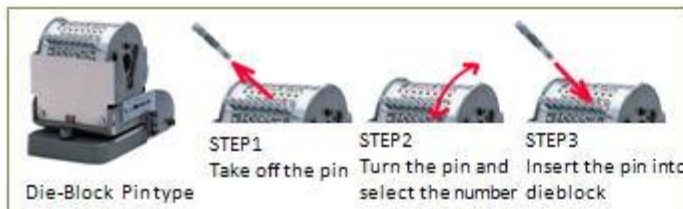
### - DIE BLOCK -



Pin Type 905

Lever Type 905L

For easier number/character changes, convenience will be added if a 'pin system' model is selected when desired to perforate date, and a 'lever sliding system' one, for numbers.



Die-Block Pintype



Die-Block Levertype

### - LINE UP -

#### Heavy-duty electrically Driven type



- MODEL 112-905 (Pin)
- MODEL 112-905L (Lever)

Perforating ability 30 sheets of 64gs/m<sup>2</sup> paper when 8-digit is perforated

Outer Dimensions 277x436x308mm  
Weight 40 kg

August 2015

**M.A.I. SAS**

15, rue de la justice  
75020 Paris  
France

**www.maiparis.com**

Tél. (33) 01 43 43 24 74  
Fax (33) 01 43 43 25 70  
[contact@maiparis.com](mailto:contact@maiparis.com)

Note that product specifications are subject to change without notice and versions of products shown on this site may not yet be available in your local market. While we try to provide the most accurate information available, we cannot be responsible for typographical errors on the site